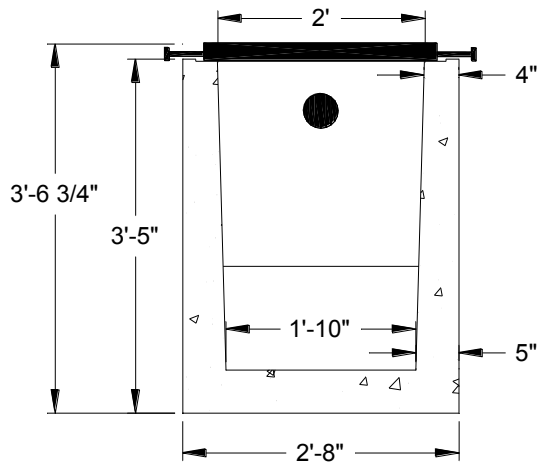
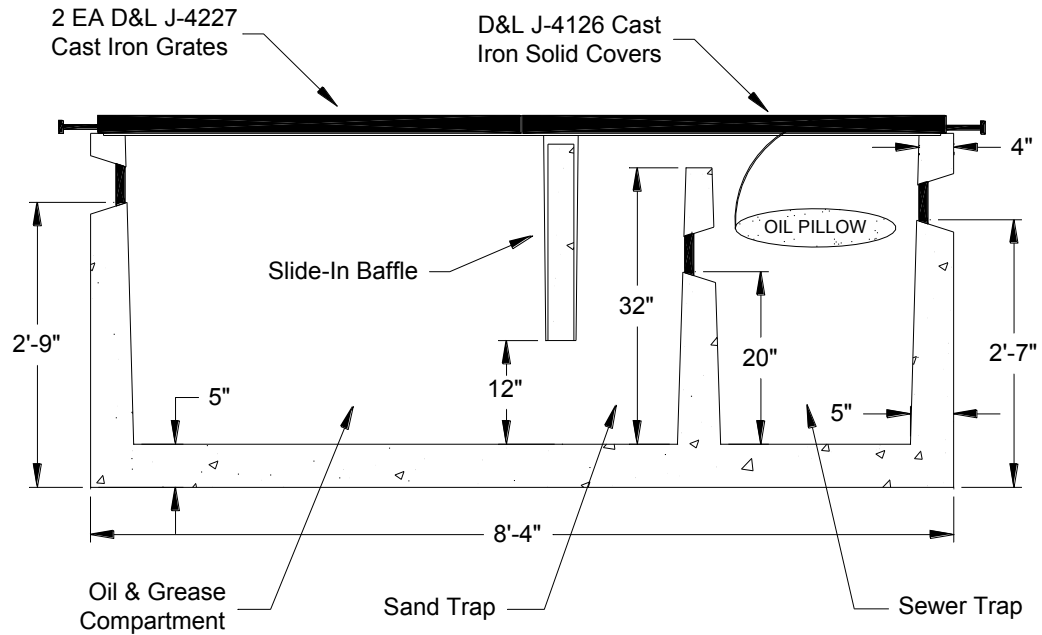


End View



Cross Section

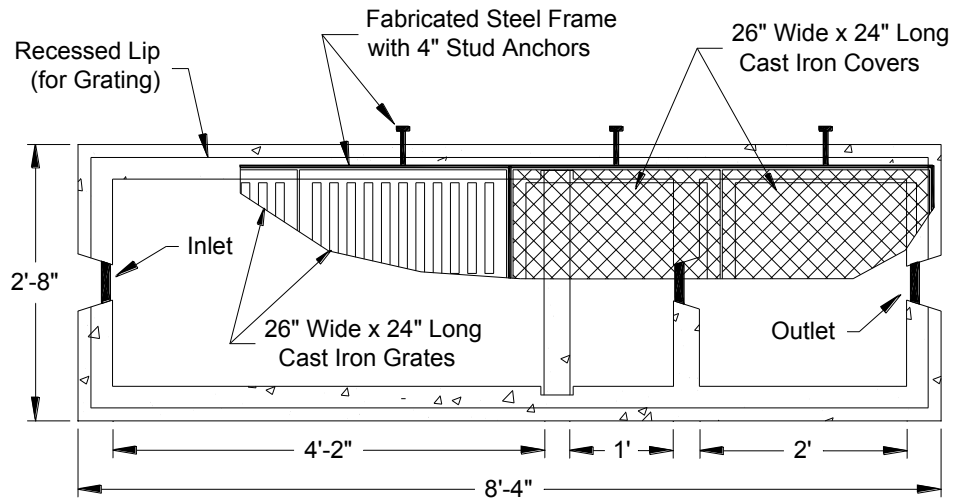


SPECIFICATIONS

Trap: Portland Type V (sulfate resistant) cement, 4000 psi (min), Wire mesh reinforcement, Tuf-Tite TS-4Pro seals for inlet and outlet pipe penetrations, Removable seal in baffle wall (remove only if inlet pipe is used).

Miscellaneous: 3 EA 24" x 16" x 6" oil sorbent pillows for sewer trap.

Traffic Rated Steel Frame & Cast Iron Grate & Cover: 1/4" x 2" steel angle frame with 6 EA 1/2" x 4" concrete anchor studs, 2 EA D&L J-4227 26" wide x 24" long x 1-1/2" thick removable cast iron grates, 2 EA D&L J-4126 26" wide x 24" long x 1-1/2" thick removable cast iron solid covers.



Top View

WEIGHTS: Tank - 5275 lb.; Embed Frame & Grate - 760 lb. [Total All Pieces = 6035 lb.]

BILLINGS PRECAST
CONCRETE RESULTS FOR HARD WORKING PEOPLE

5815 Interstate Avenue, Billings, Montana 59101
PH (406) 656-6098 FAX (406) 656-4942
www.billingsprecast.com

BPSO250GH20

250 Gallon Sand / Oil Separator
-with H-20 Steel Frame & Cast Iron Grate

DWG. NO.

SCALE: NONE

DATE: 7-26-11

REV: A
DRN: WDB