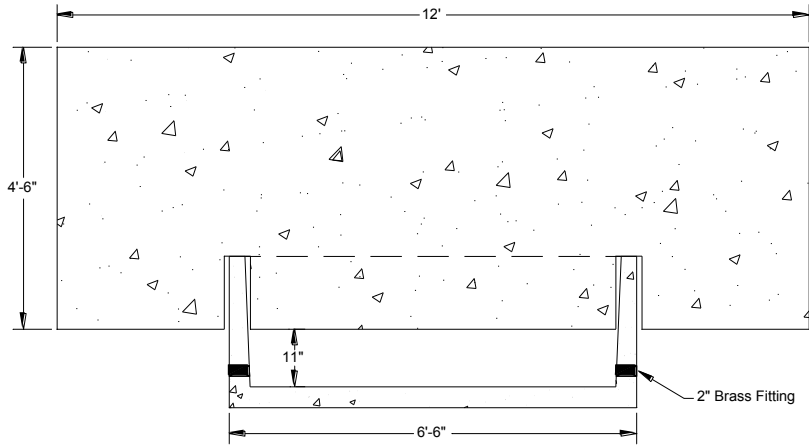
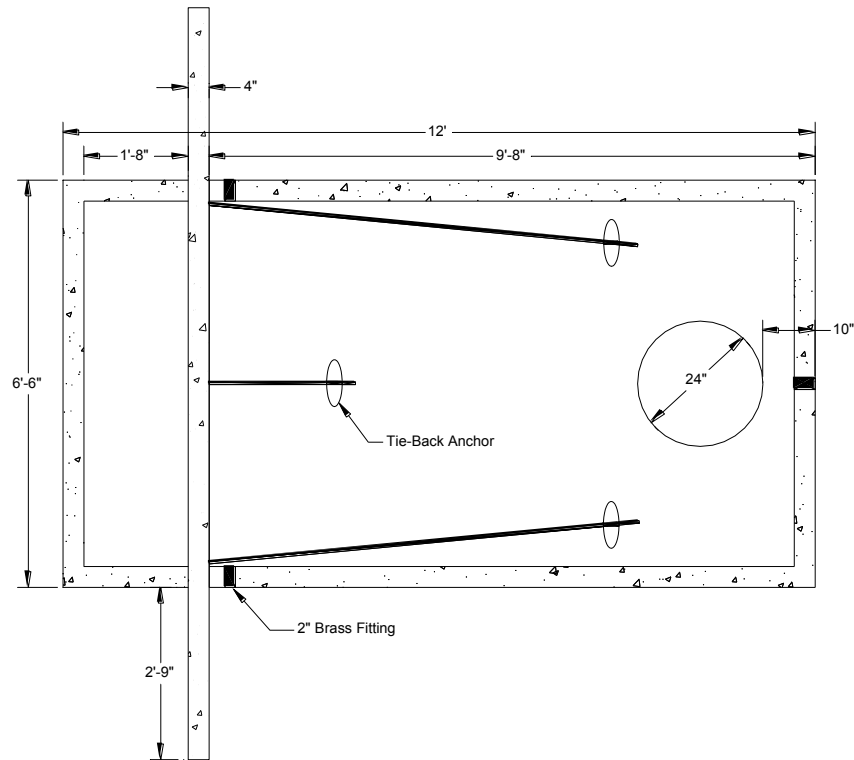
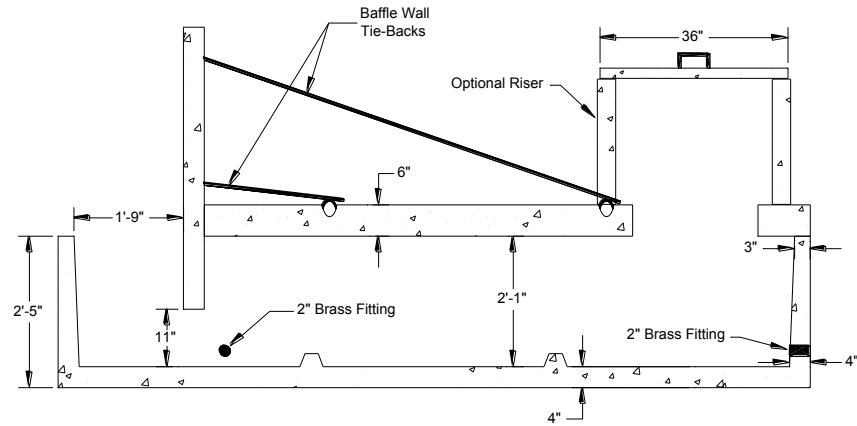


## End View



## Cross Section



## Top View

### SPECIFICATIONS

**Tank:** Portland Type V (sulfate resistant) cement, 4000 psi (min), Welded wire mesh and Grade 60 rebar reinforcement, 3 EA 2" brass FIPT fittings cast into tank wall for inlet / outlet pipe penetrations.

**Miscellaneous:** 1 EA 12' x 4'-6" x 4" thick precast retaining / baffle wall, 1 EA 9'-8" x 6'-6" x 6" thick precast lid with 24" dia. access hole, 1 EA 36" dia. x 2" thick access cover, 3 EA cable clamps for baffle wall tie-backs.

**NOTE 1):** Tank must be installed per Billings Precast's 'Tank Installation Guide' or warranty will be VOID.

**WEIGHTS:** Tank - 7250 lb.; Lid - 4507 lb.; Baffle Wall - 2675 lb.; [ Total = 14,608 lb. ]

**BILLINGS PRECAST**  
 CONCRETE RESULTS FOR HARD WORKING PEOPLE  
 5815 Interstate Avenue, Billings, Montana 59101  
 PH (406) 656-6098 FAX (406) 656-4942  
 www.billingsprecast.com

DWG. NO. **BPSK1100B**  
 1100 Gallon Stock Tank – Bury Style

SCALE: NONE  
 DATE: 2-14-12  
 REV: DRN: WDB