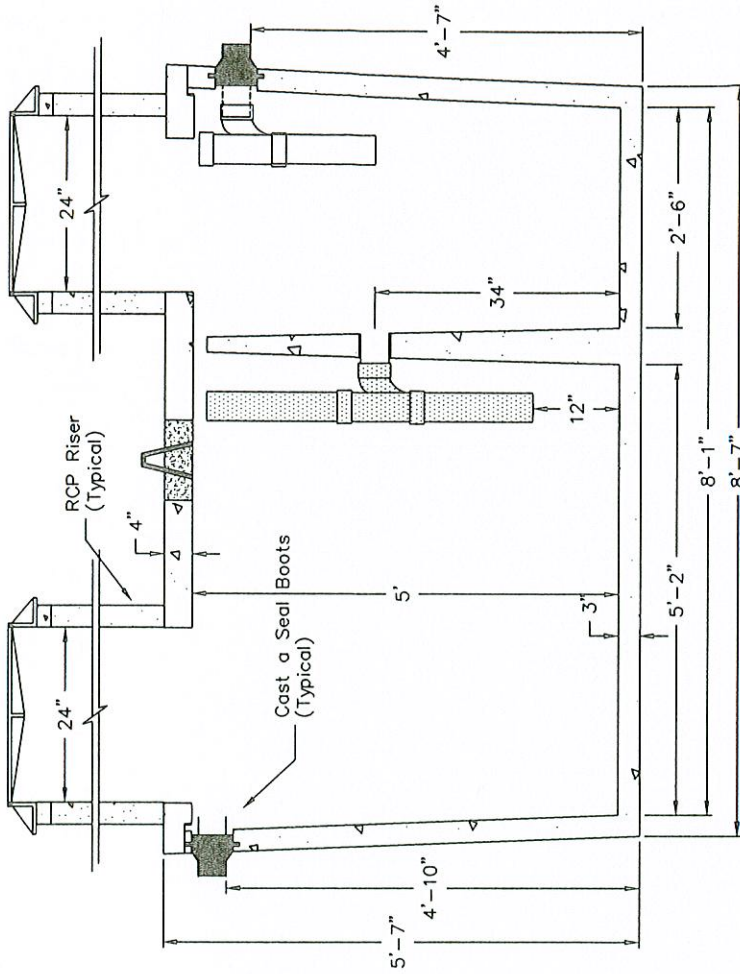
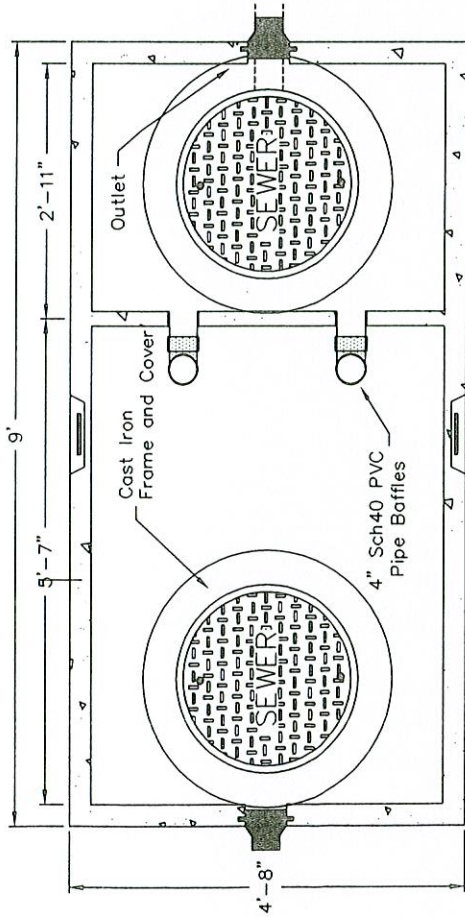
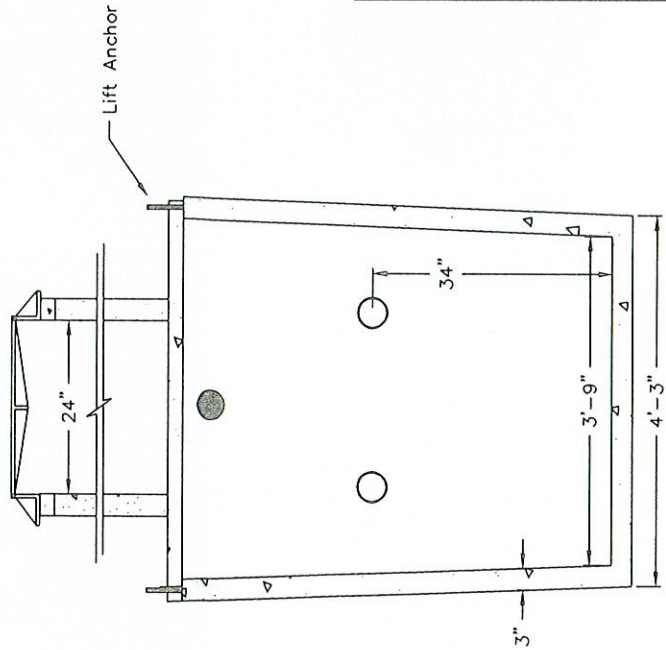


Top View



Cross Section

End View



SPECIFICATIONS

Oil Separator: Portland Type V (sulfate resistant) cement, 4000 PSI (minimum), 6.6 W.W.M and #4 Grade 60 rebar reinforcement, 4" flexible rubber boot connectors to seal inlet and outlet pipe penetrations, 2 EA 24" dia. access holes in lid, 2 EA oil trap pipe baffles.

Miscellaneous: 24" dia D&L A1024 bolt down and gasketed cast iron frame and lid